

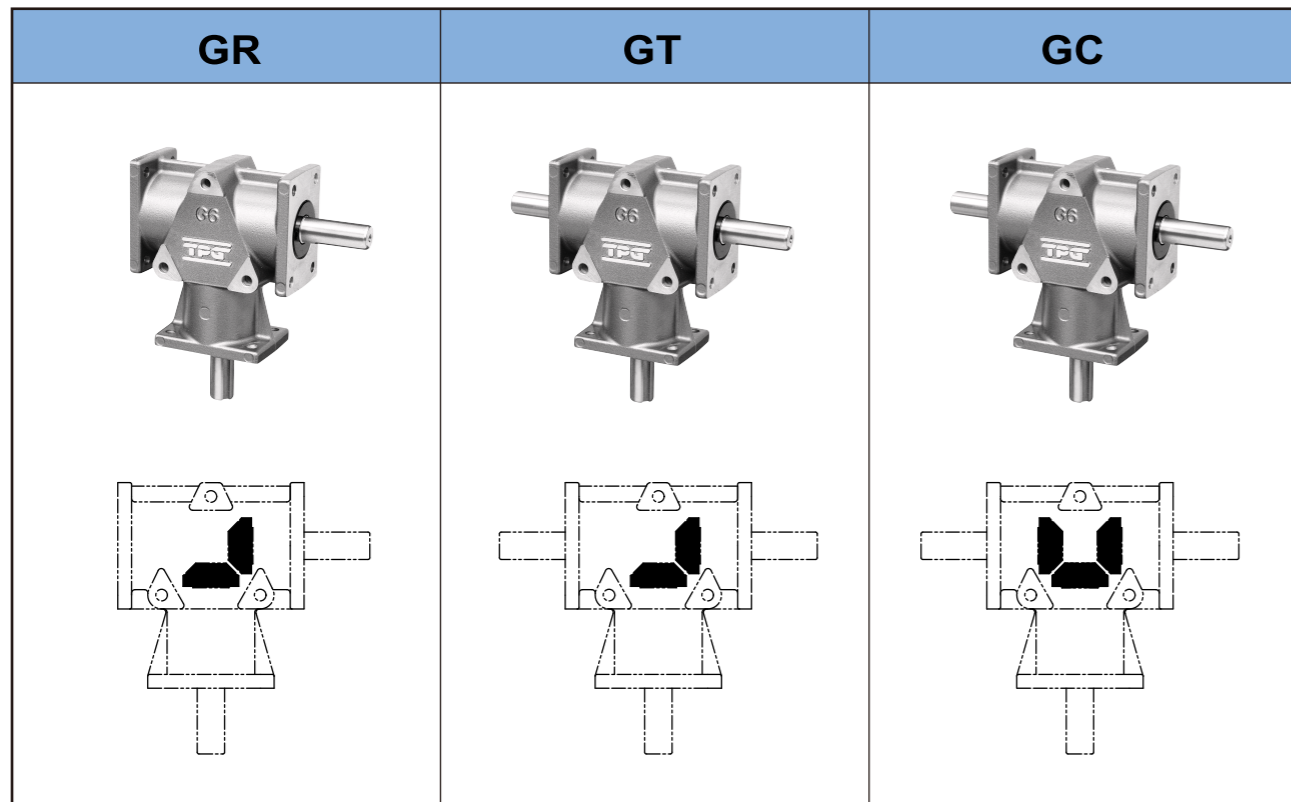
TPG 十字轉向器
SPIRAL BEVEL GEAR BOX

十字轉向器
SPIRAL BEVEL GEAR BOX



十字轉向器 SPIRAL BEVEL GEAR BOX
 機種說明、型號對照表 GEAR MOTOR SERIES & CATAL NO. GUIDE

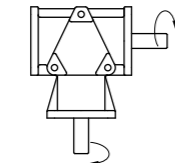
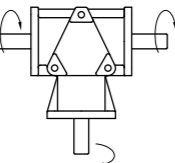
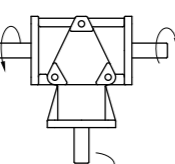
機種說明 Gear Motor Series



型號對照表 Catal No. Guide

G — **R** — **S** **0375** **A**

G = 傘齒輪 BEVEL GEAR

R  **T**  **C** 

S = 英制 INCH SIZE
M = 公制 MM SIZE

速比
GEAR RATIO
A 1:1
B 1:2

英制軸心 SHAFT DIA. INCH SIZE
 0375=0.375"
 0500=0.5"
 0625=0.625"
 0750=0.75"
 1000=1"

公制軸心 SHAFT DIA. MM SIZE
 0090=9mm
 0110=11mm
 0140=14mm
 0190=19mm
 0240=24mm

註：1.十字轉向器尚未全面供貨，需求之規格請與本公司聯絡。



十字轉向器
 MOTORS & DRIVES SPIRAL BEVEL GEAR BOX

GR TYPE

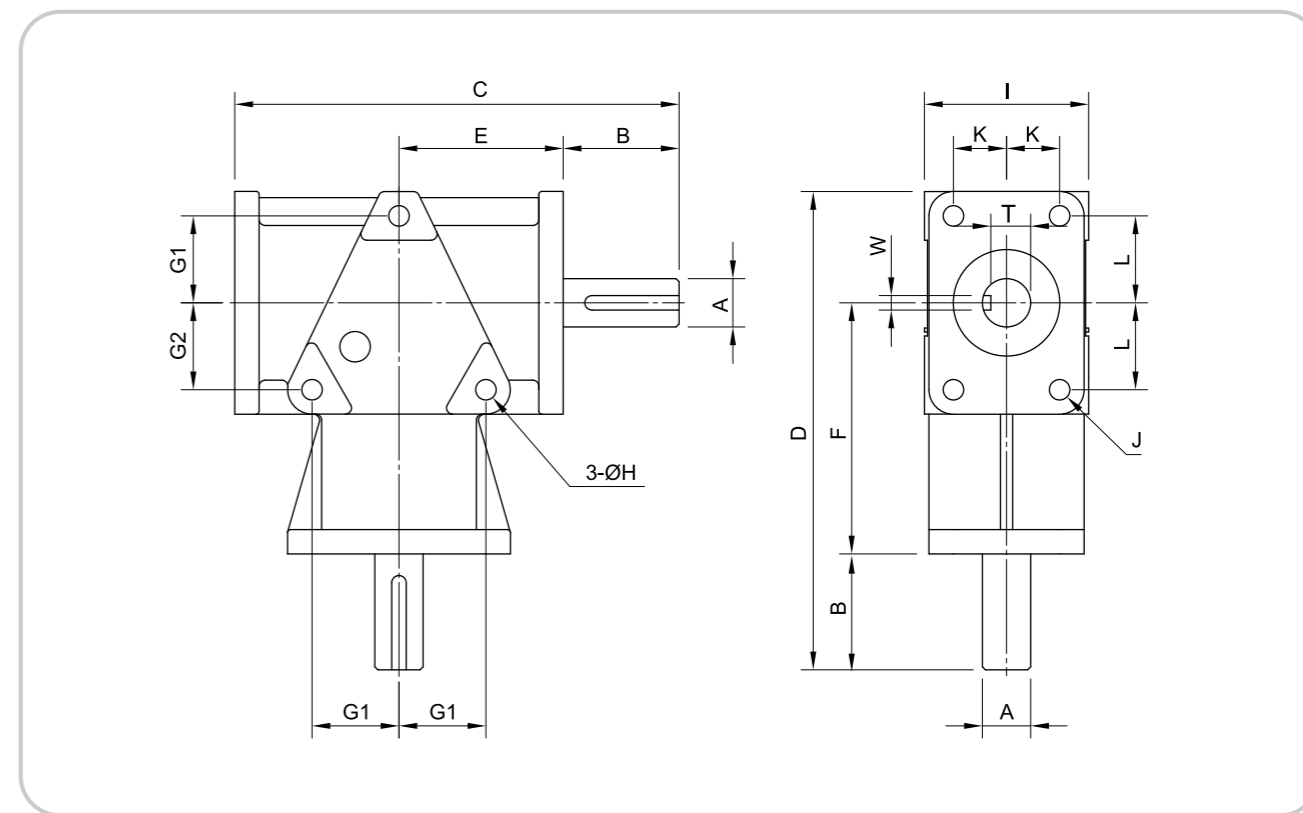


英制尺寸表 Inch Size

型號Catal. No.	A	T	W	B	C	D	E	F	G1	G2	H	I	J	K	L	Weight
GRS-0375A(B)	0.375	0.156	0.296	0.625	3.875	3.875	1.625	2.187	0.812	0.812	0.193	1.500	0.166	0.500	0.750	2 lbs
GRS-0500A(B)	0.500	0.156	0.422	1.000	4.750	4.937	1.875	2.875	0.875	0.875	0.265	1.750	0.265	0.562	1.125	3 lbs
GRS-0625A(B)	0.625	0.187	0.515	1.500	5.750	6.250	2.125	3.250	1.125	1.125	0.265	2.125	0.265	0.687	1.125	4 lbs
GRS-0750A(B)	0.750	0.187	0.641	1.750	7.500	7.937	2.875	4.375	1.375	1.375	0.328	2.625	0.328	0.812	1.375	8 lbs
GRS-1000A(B)	1.000	0.250	0.875	2.750	9.250	11.000	3.250	6.000	1.750	2.750	0.390	4.000	0.375-16	1.500	1.500	20 lbs

公制尺寸表 MM Size

型號Catal. No.	A	T	W	B	C	D	E	F	G1	G2	H	I	J	K	L	Weight
GRM-0090A(B)	9	6.2	3	16	98	98	41	56	20.6	20.6	4.90	38.1	4.20	12.7	19.1	0.9 kg
GRM-0110A(B)	11	8.5	4	25	121	125	48	73	22.2	22.2	6.73	44.5	6.73	14.3	28.6	1.4 kg
GRM-0140A(B)	14	11	5	38	146	159	54	83	28.6	28.6	6.73	54.0	6.73	17.5	28.6	1.8 kg
GRM-0190A(B)	19	15.5	6	44	191	202	73	111	34.9	34.9	8.33	66.7	8.33	20.6	34.9	3.6 kg
GRM-0240A(B)	24	20	8	70	235	279	83	152	44.5	69.9	9.90	101.6	M12X1.75	38.1	38.1	9.1 kg



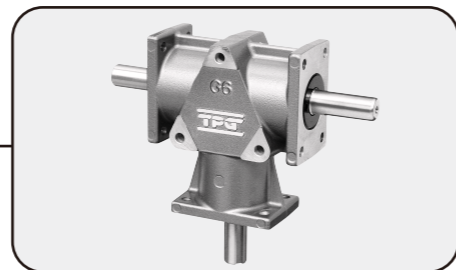
齒輪減速機 GEAR MOTOR
 蝸輪減速機 WORM GEAR SPEED REDUCER
 齒輪減速機 SPIRAL GEAR BOX
 無段變速機 VARIABLE SPEED DRIVER
 振動馬達 VIBRATION MOTOR
 轉矩馬達 TORQUE MOTOR
 鼓風機 PRESSURE BLOWER
 煞車器、離合器 MAGNETIC CLUTCH & BRAKE
 其他 OTHER

齒輪減速機 GEAR MOTOR
 蝸輪減速機 WORM GEAR SPEED REDUCER
 齒輪減速機 SPIRAL GEAR BOX
 無段變速機 VARIABLE SPEED DRIVER
 振動馬達 VIBRATION MOTOR
 轉矩馬達 TORQUE MOTOR
 鼓風機 PRESSURE BLOWER
 煞車器、離合器 MAGNETIC CLUTCH & BRAKE
 其他 OTHER



十字轉向器
SPIRAL BEVEL GEAR BOX

GT TYPE



英制尺寸表 Inch Size

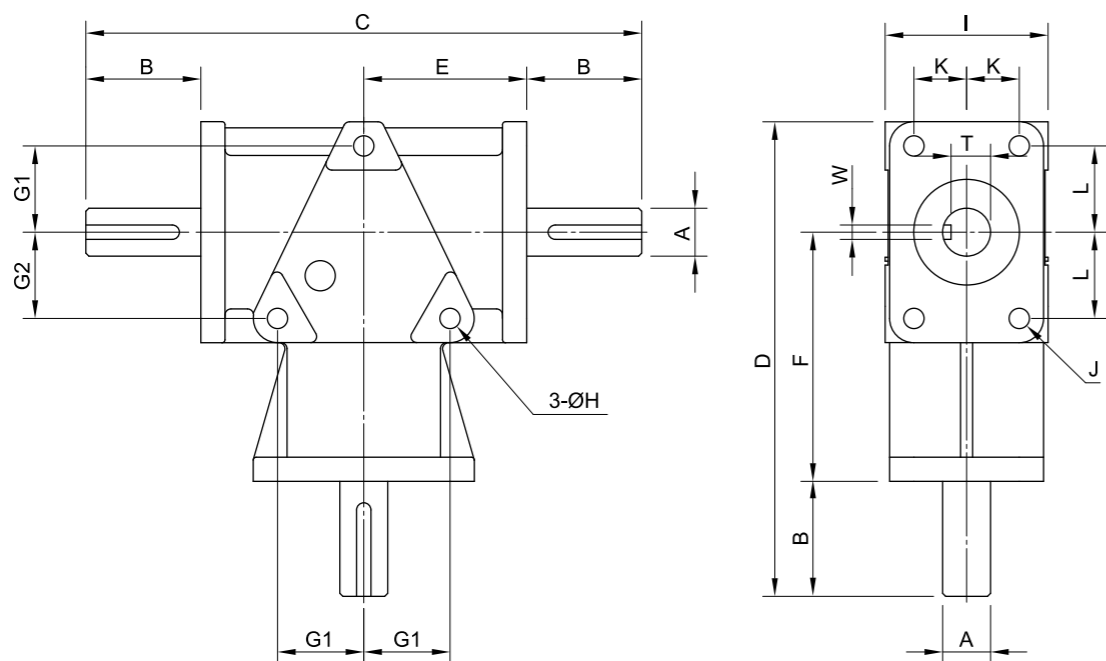
inch

型號Catal. No.	A	T	W	B	C	D	E	F	G1	G2	H	I	J	K	L	Weight
GTS-0375A(B)	0.375	0.156	0.296	0.625	4.500	3.875	1.625	2.187	0.812	0.812	0.193	1.500	0.166	0.500	0.750	2 lbs
GTS-0500A(B)	0.500	0.156	0.422	1.000	5.750	4.937	1.875	2.875	0.875	0.875	0.265	1.750	0.265	0.562	1.125	3 lbs
GTS-0625A(B)	0.625	0.187	0.515	1.500	7.250	6.250	2.125	3.250	1.125	1.125	0.265	2.125	0.265	0.687	1.125	4 lbs
GTS-0750A(B)	0.750	0.187	0.641	1.750	9.250	7.937	2.875	4.375	1.375	1.375	0.328	2.625	0.328	0.812	1.375	8 lbs
GTS-1000A(B)	1.000	0.250	0.875	2.750	12.000	11.000	3.250	6.000	1.750	2.750	0.390	4.000	0.375-16	1.500	1.500	20 lbs

公制尺寸表 MM Size

mm

型號Catal. No.	A	T	W	B	C	D	E	F	G1	G2	H	I	J	K	L	Weight
GTM-0090A(B)	9	6.2	3	16	114	98	41	56	20.6	20.6	4.90	38.1	4.20	12.7	19.1	0.9 kg
GTM-0110A(B)	11	8.5	4	25	146	125	48	73	22.2	22.2	6.73	44.5	6.73	14.3	28.6	1.4 kg
GTM-0140A(B)	14	11	5	38	184	159	54	83	28.6	28.6	6.73	54.0	6.73	17.5	28.6	1.8 kg
GTM-0190A(B)	19	15.5	6	44	235	202	73	111	34.9	34.9	8.33	66.7	8.33	20.6	34.9	3.6 kg
GTM-0240A(B)	24	20	8	70	305	279	83	152	44.5	69.9	9.90	101.6	M12X1.75	38.1	38.1	9.1 kg



十字轉向器
SPIRAL BEVEL GEAR BOX

GC TYPE



英制尺寸表 Inch Size

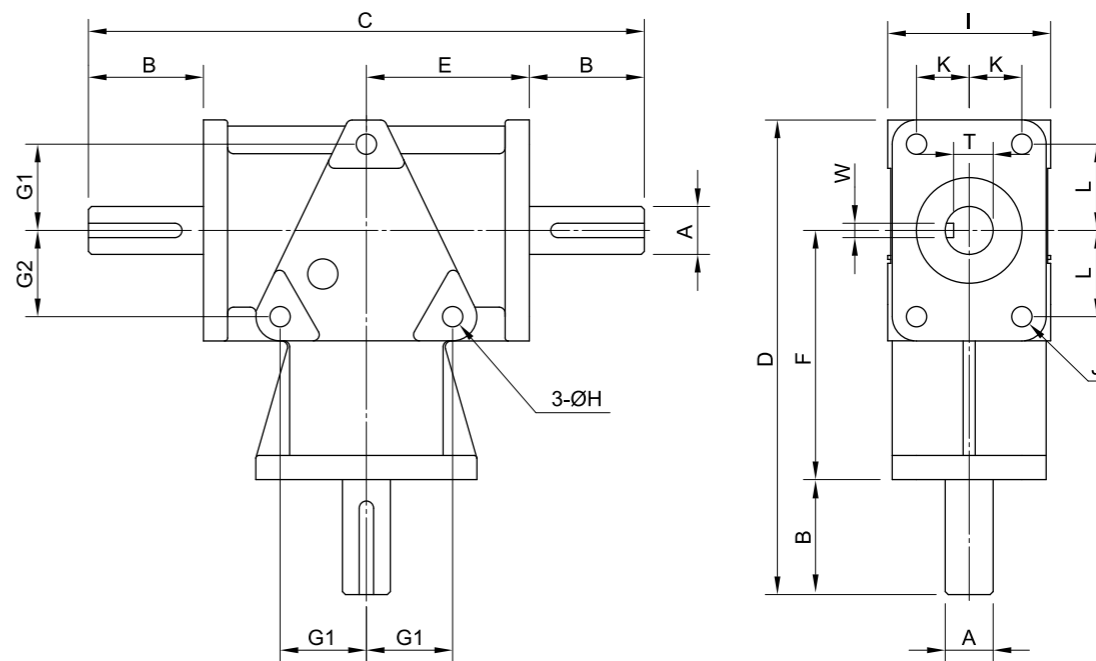
inch

型號Catal. No.	A	T	W	B	C	D	E	F	G1	G2	H	I	J	K	L	Weight
GCS-0375A(B)	0.375	0.156	0.296	0.625	4.500	3.875	1.625	2.187	0.812	0.812	0.193	1.500	0.166	0.500	0.750	2 lbs
GCS-0500A(B)	0.500	0.156	0.422	1.000	5.750	4.937	1.875	2.875	0.875	0.875	0.265	1.750	0.265	0.562	1.125	3 lbs
GCS-0625A(B)	0.625	0.187	0.515	1.500	7.250	6.250	2.125	3.250	1.125	1.125	0.265	2.125	0.265	0.687	1.125	4 lbs
GCS-0750A(B)	0.750	0.187	0.641	1.750	9.250	7.937	2.875	4.375	1.375	1.375	0.328	2.625	0.328	0.812	1.375	8 lbs
GCS-1000A(B)	1.000	0.250	0.875	2.750	12.000	11.000	3.250	6.000	1.750	2.750	0.390	4.000	0.375-16	1.500	1.500	20 lbs

公制尺寸表 MM Size

mm

型號Catal. No.	A	T	W	B	C	D	E	F	G1	G2	H	I	J	K	L	Weight
GCM-0090A(B)	9	6.2	3	16	114	98	41	56	20.6	20.6	4.90	38.1	4.20	12.7	19.1	0.9 kg
GCM-0110A(B)	11	8.5	4	25	146	125	48	73	22.2	22.2	6.73	44.5	6.73	14.3	28.6	1.4 kg
GCM-0140A(B)	14	11	5	38	184	159	54	83	28.6	28.6	6.73	54.0	6.73	17.5	28.6	1.8 kg
GCM-0190A(B)	19	15.5	6	44	235	202	73	111	34.9	34.9	8.33	66.7	8.33	20.6	34.9	3.6 kg
GCM-0240A(B)	24	20	8	70	305	279	83	152	44.5	69.9	9.90	101.6	M12X1.75	38.1	38.1	9.1 kg



TPG

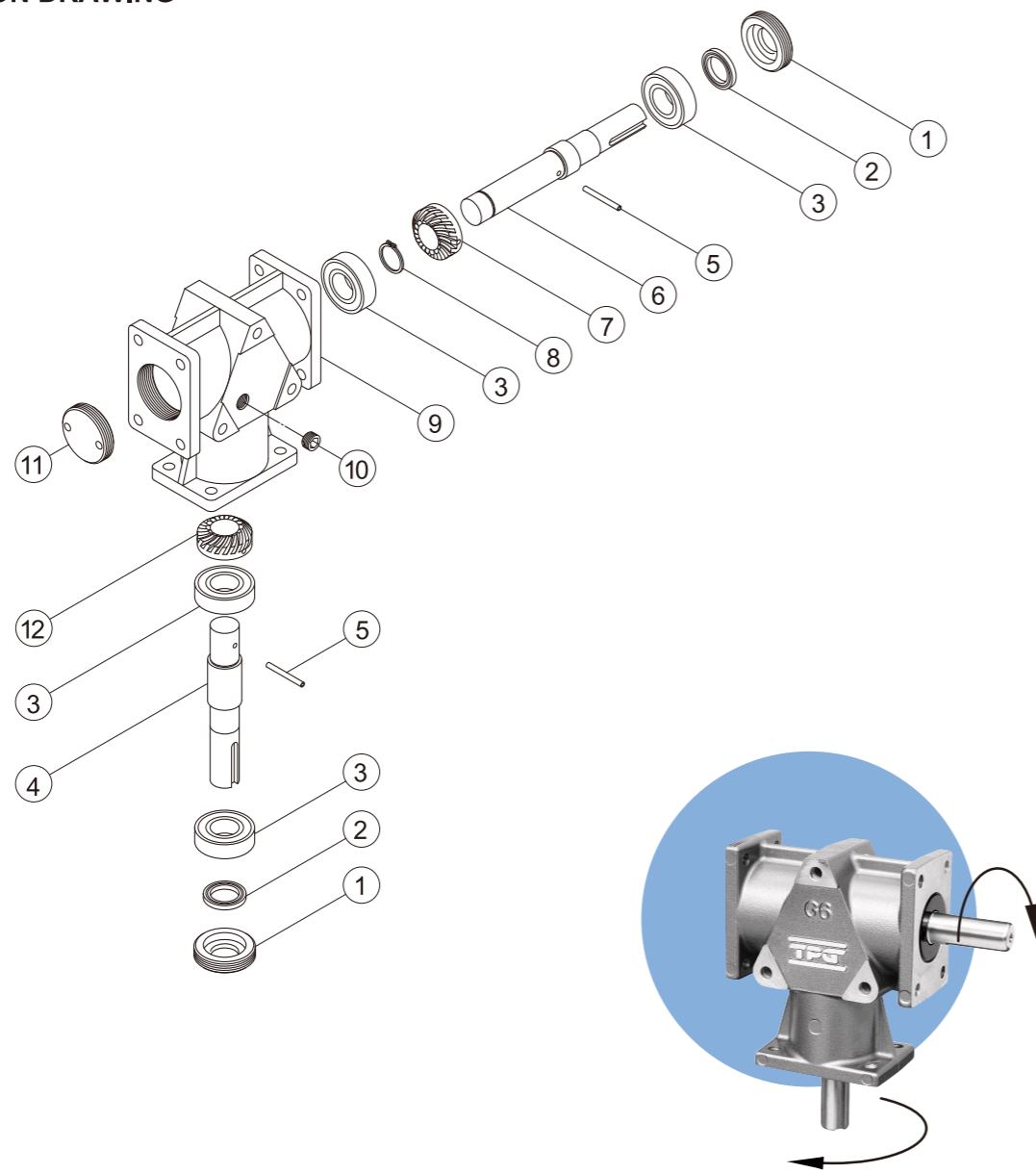
十字轉向器 SPIRAL BEVEL GEAR BOX

分解圖 EXPLOSION DRAWING

零件表 Part list

順號 NO.	品名	Description	順號 NO.	品名	Description	順號 NO.	品名	Description
1	封蓋	Cover	5	空心梢	Pin	9	機殼	House
2	油封	Oil seal	6	單出力軸	Single output shaft	10	止付螺絲	Screw
3	軸承	Bearing	7	左旋齒輪	Left spiral gear	11	無孔封蓋	House lid
4	入力軸	Input shaft	8	扣環	Ring	12	右旋齒輪	Right spiral gear

GR TYPE分解圖 EXPLOSION DRAWING

**TPG**

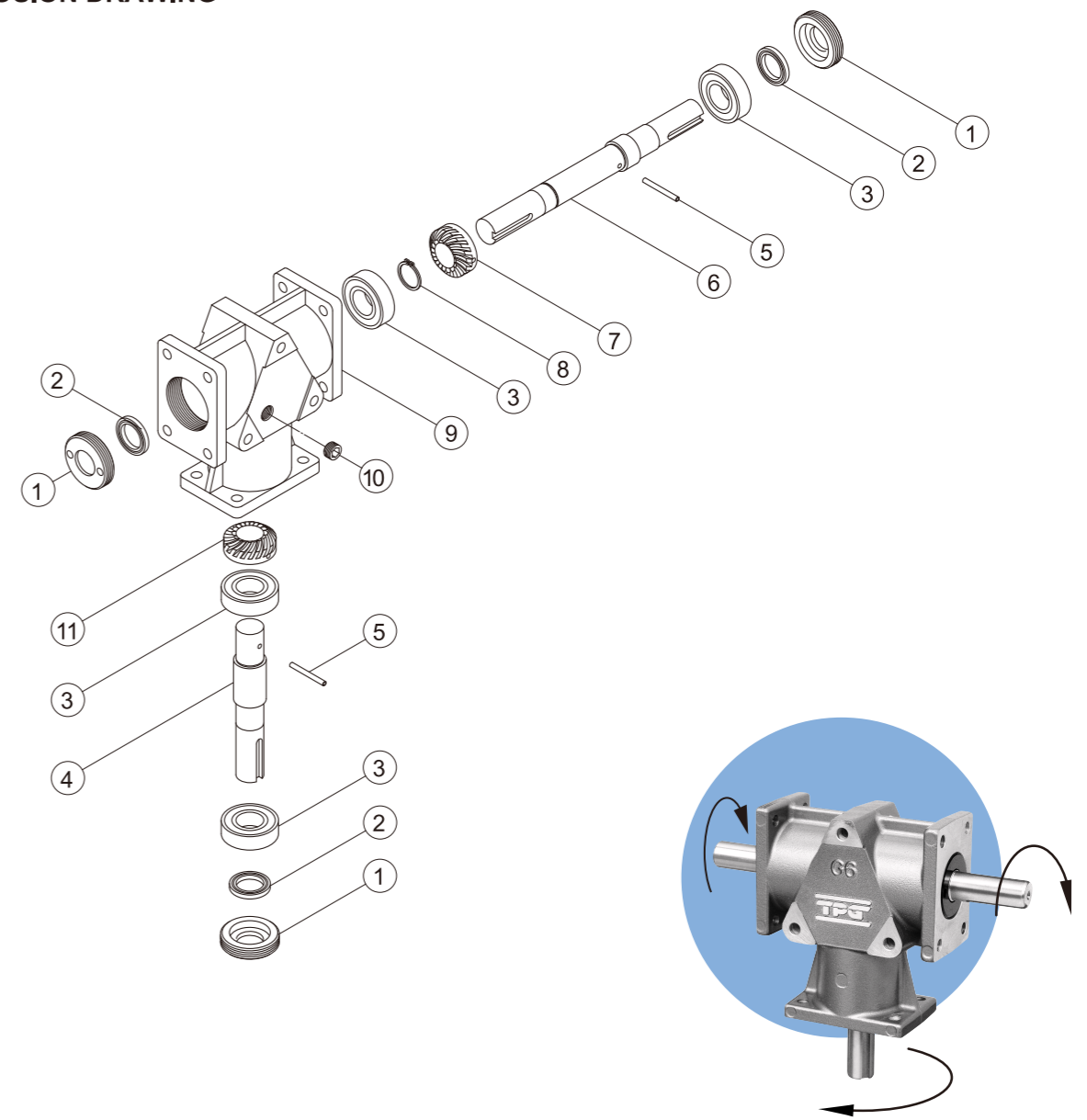
十字轉向器 SPIRAL BEVEL GEAR BOX

分解圖 EXPLOSION DRAWING

零件表 Part list

順號 NO.	品名	Description	順號 NO.	品名	Description	順號 NO.	品名	Description
1	封蓋	Cover	5	空心梢	Pin	9	機殼	House
2	油封	Oil seal	6	單出力軸	Single output shaft	10	止付螺絲	Screw
3	軸承	Bearing	7	左旋齒輪	Left spiral gear	11	右旋齒輪	Right spiral gear
4	入力軸	Input shaft	8	扣環	Ring			

GT TYPE分解圖 EXPLOSION DRAWING



TPG[®]

十字轉向器 SPIRAL BEVEL GEAR BOX 分解圖 EXPLOSION DRAWING

零件表 Part list

順號 NO.	品名	Description	順號 NO.	品名	Description	順號 NO.	品名	Description
1	封蓋	Cover	5	空心梢	Pin	9	付螺絲	Screw
2	油封	Oil seal	6	單出力軸	Single output shaft	10	右旋齒輪	Right spiral gear
3	軸承	Bearing	7	左旋齒輪	Left spiral gear			
4	入力軸	Input shaft	8	機殼	House			

GC TYPE分解圖 EXPLOSION DRAWING

